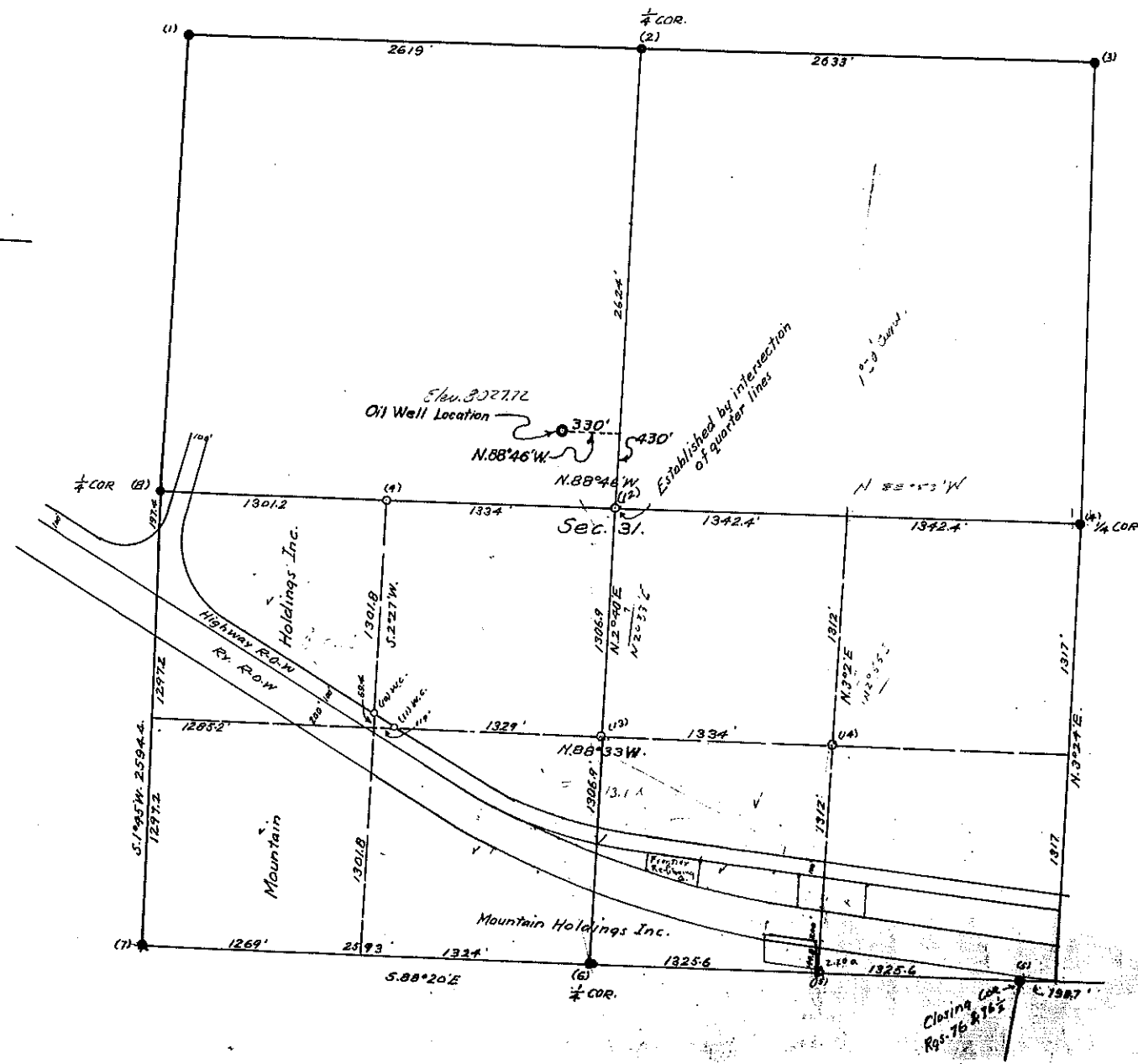
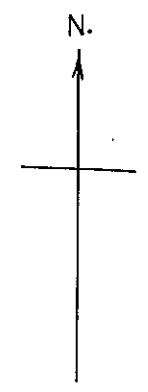


one over



For checked true courses:
Add 7' to NW & SE. "
Subt 7' from NE & SW "

T2 N. R. 76 W. 6 P.M.

Govt. corners identified = +, + . Corners of previous subd. surveys = X. Corners established on this survey = O

Description of Corners found, or established on this survey.	
(1) Govt. stone properly marked	(7) Govt. stone properly mkd
(2) Stone missing, position checked at corner fence post	(8) "
(3) " " iron pin in center of road	(9) 1/2 inch iron pin
(4) " " "	(10) 1/2 "
(5) Govt. stone properly mkd.	(11) 1/2 "
(6) " " "	(12) plug & stake
(13) Square head 1" bolt. (14) 1/2" iron pipe (15) iron pin .20" long, 1/2" diam	

COUNTY SURVEYORS RECORD
 GRAND COUNTY, COLORADO.

Survey by Frank A. Huntington Co. Sur.
 For Mountain Holdings, Inc.
 Date July 8-9-10, 1932 Scale of Map 1/16" = 600 Ft.
 Courses True Var. 15° East
 Measurements 400 Ft. Tapes
 Instruments Gu. by Transit
 Assistants Harold Ingram