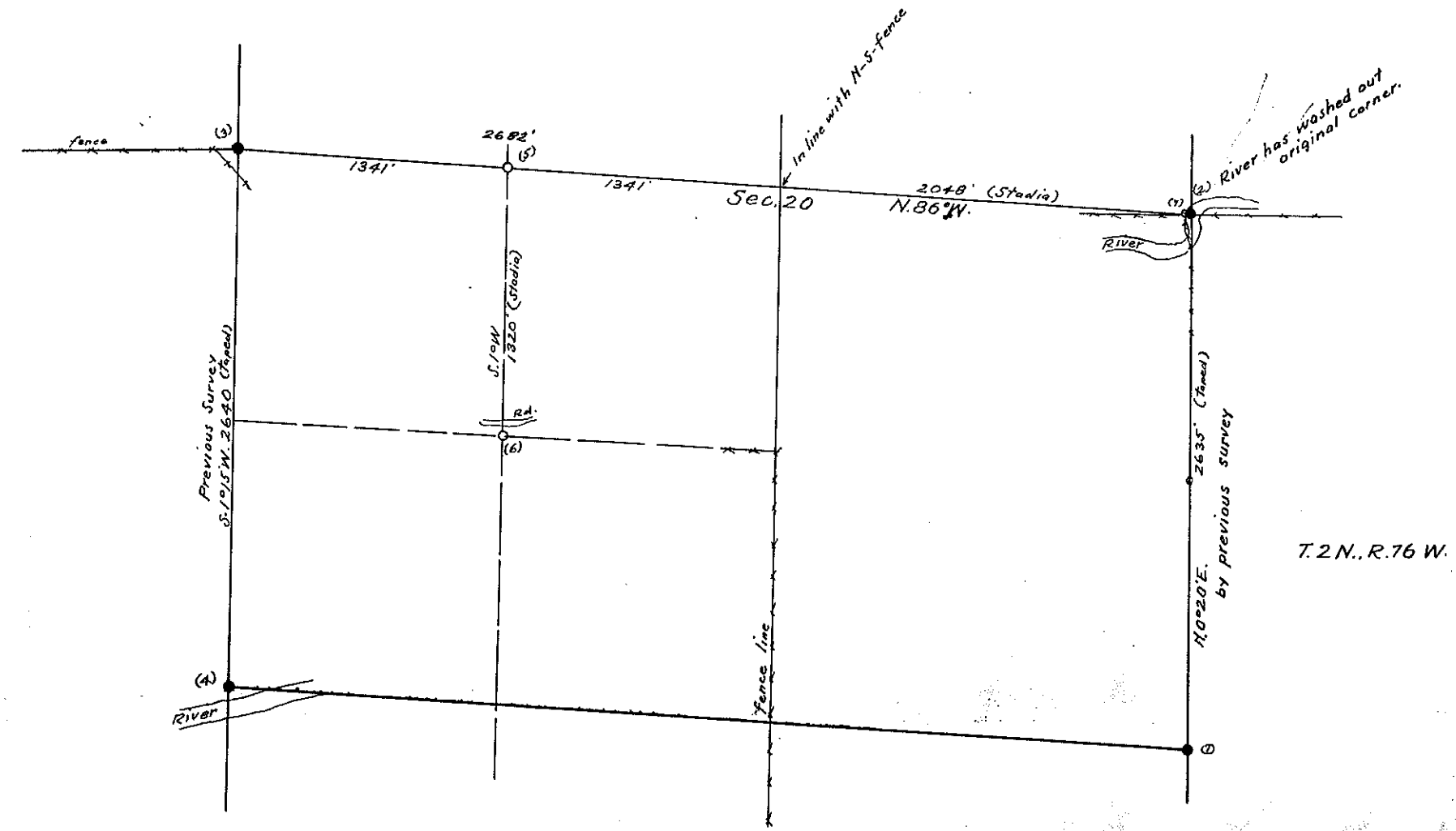


This map made for purpose of preserving the location of E. 1/4 Cor. of Section 20 and to show the relation thereof to the W. 1/4 Cor. of Sec. 20.

Note - A complete retracement of Sec. 20 should be made.



Govt. corners identified = ϕ , + . Corners of previous subd. surveys = X. Corners established on this survey = O
 Description of Corners found, or established on this survey.

(1)	Identified Govt. Stone Corners	(7)	Set iron pipe, 33" long, 1 1/2" diam., 25" in ground, for witness
(2)	Identified Govt. Stone Corners	(8)	car. to 1/4 cor., chiselled 1/4 W.C. N. 86° 40' W. 10 ft. of true point
(3)	Set stakes	(9)	
(4)	Set stakes	(10)	
(5)	Set stakes	(11)	
(6)	Set stakes	(12)	

COUNTY SURVEYORS RECORD
 GRAND COUNTY, COLORADO.
 Survey by Frank J. Huntington Co. Sur.
 For Winnifred Huggins
 Date 11/18/42 Scale of Map 1" = 500'
 Courses Mag. Var. 15° 55' E.
 Measurements Stadia & Steel Tape
 Instruments Gurley
 Assistants Rubin