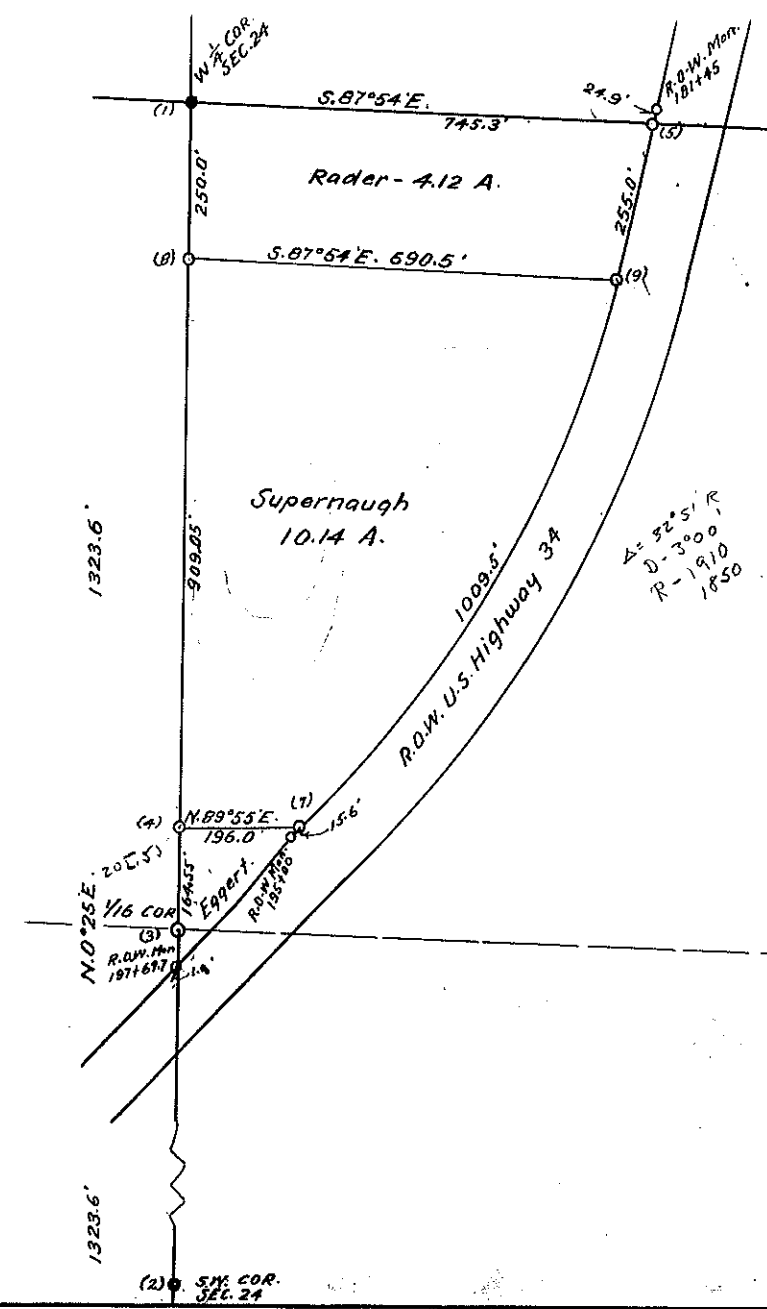


N.
↑
7.3 N., R 76 W.



Govt. corners identified = +, +. Corners of previous subd. surveys = X. Corners established on this survey = O

Description of Corners found, or established on this survey.	
(1) Govt. stone corners property mkd	(7)
(2) Plug, whence SW cor. filling sta = S. 82° 45' W. 9.7 ft.	(8) } Substantial stakes & plugs, with mound of stone
(3) Plug, " 14 pine tree, mkd BTX = N. 45° W. 7.3 ft.	(9)
(4) Stake & md. stone, as WC. 3' So. of true point.	(10)
(5) Stake & md. stone, as WC. 3' So. of true point.	(11)
(6) Stake & md. stone, as WC. 3' So. of true point.	(12)

COUNTY SURVEYORS RECORD
 GRAND COUNTY, COLORADO.
 Survey by *James J. Huntington* Co. Sur.
 For *Rachel Rader*
 Date *8/13/45* Scale of Map *1" = 200'*
 Course *True* *N 15° 40' E*
 Measurements *400 steel tape*
 Instruments *Gurley transit*
 Assistants *Clyde Gudgel*