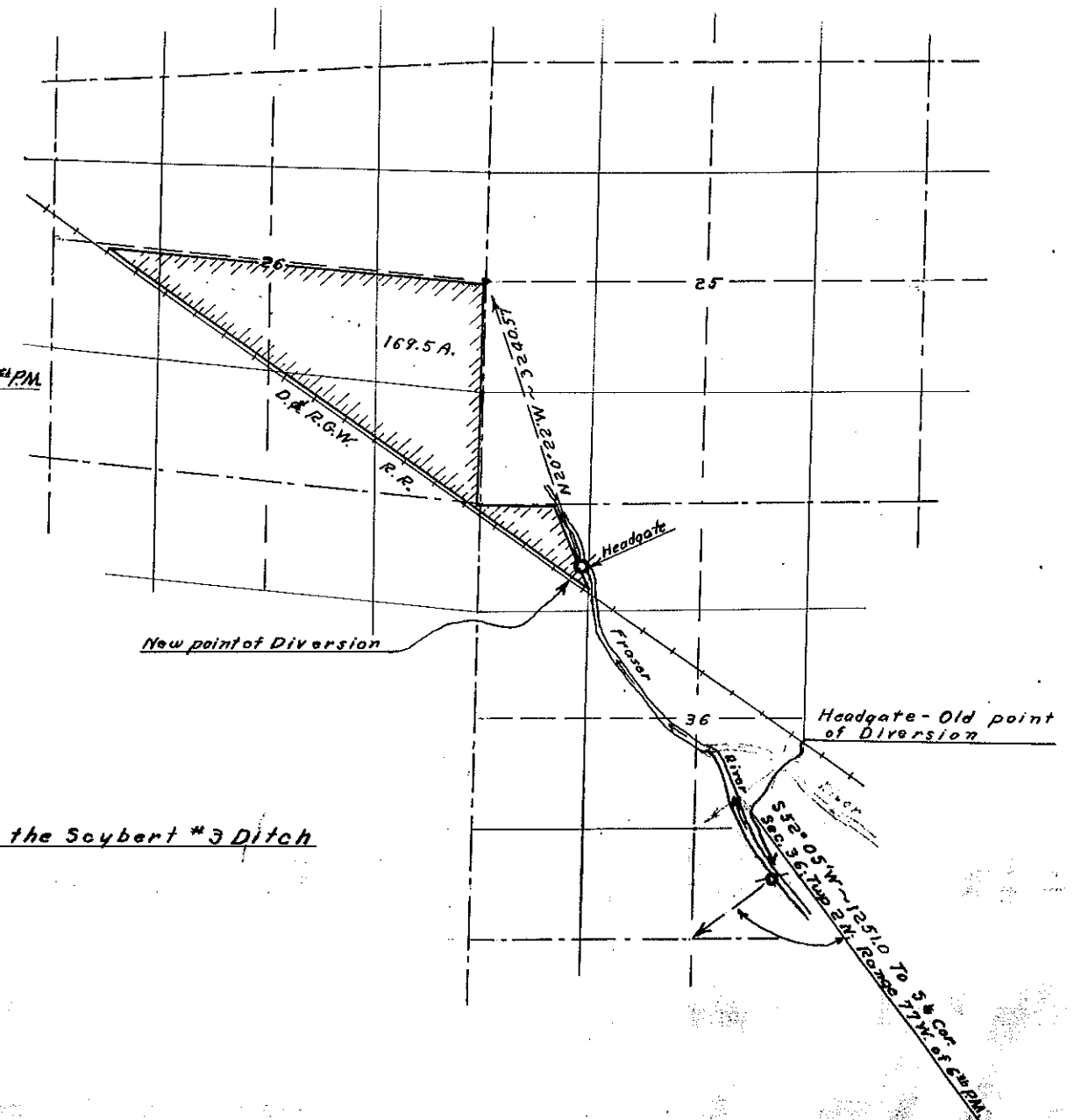


Sections 25-26-36, Twp 2 North, Range 77 West of 6<sup>th</sup> P.M.



Change of Point of Diversion of the Scybert #3 Ditch

Govt. corners identified = + . Corners of previous subd. surveys = X. Corners established on this survey = O

Description of Corners found, or established on this survey.	
(1)	(7)
(2)	(8)
(3)	(9)
(4)	(10)
(5)	(11)
(6)	(12)

**COUNTY SURVEYORS RECORD**  
 GRAND COUNTY, COLORADO.

Survey by W. J. H. HARRIS Co. Sur.  
 For AMES HARRIS  
 Date JUN 19, 1913 Scale of Map 5 in. = 1 mile  
 Courses T.C.M.R. Var. 19° 30' E.  
 Measurements Stadia  
 Instruments Transit  
 Assistants Yarn Marshall