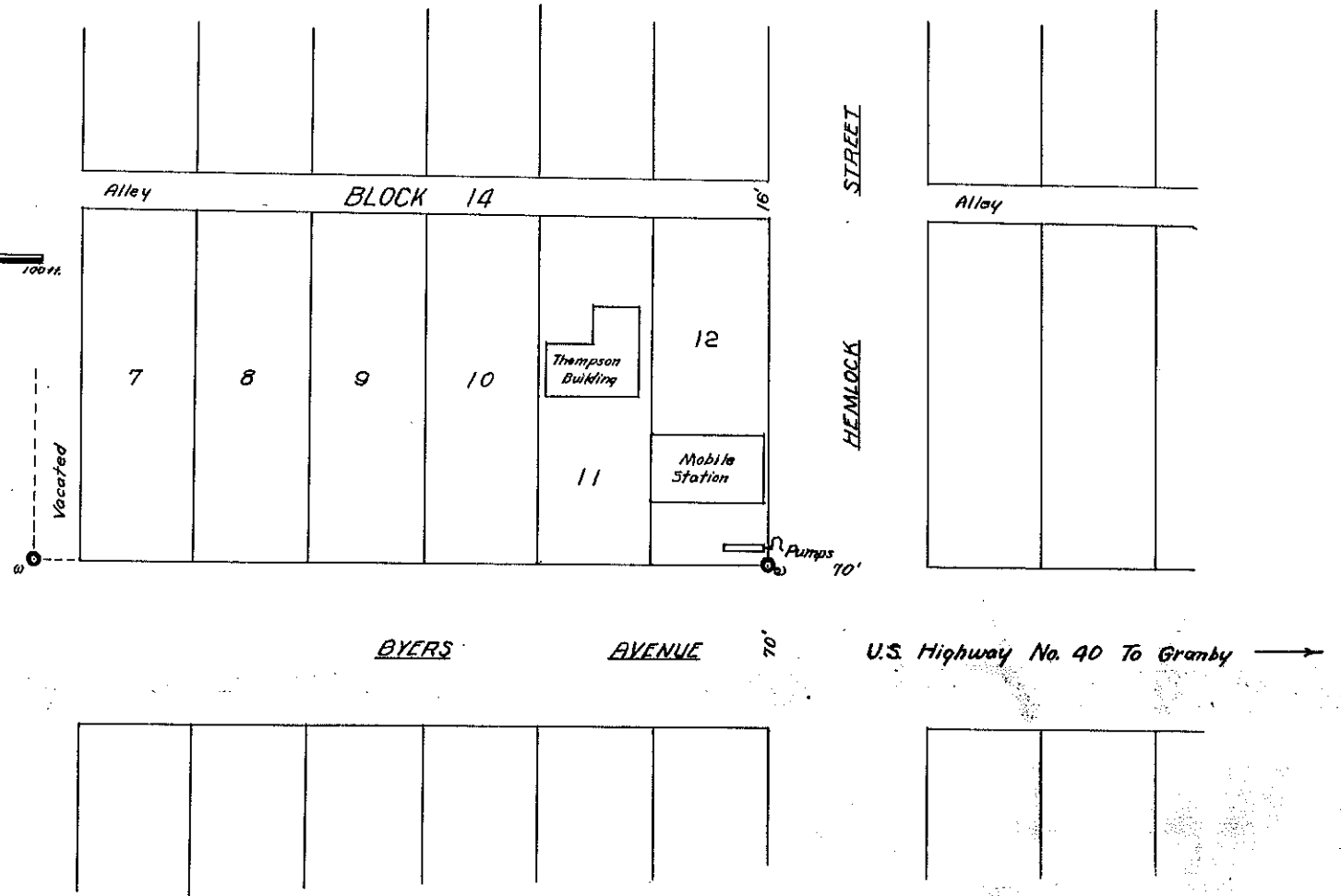
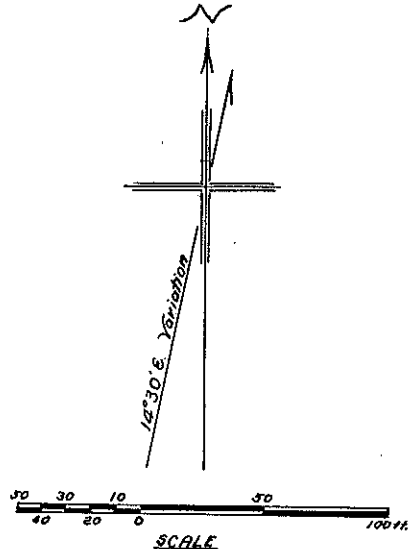


TOWN OF HOT SULPHUR SPRINGS, COLO.



Govt. corners identified = ◆, + . Corners of previous subd. surveys = X. Corners established on this survey = O

Description of Corners found, or established on this survey.	
(1) 1/2" iron pipe set 18" in ground.	(7)
(2) " " " " " " " "	(8)
(3) " " " " " " " "	(9)
(4) " " " " " " " "	(10)
(5) " " " " " " " "	(11)
(6) " " " " " " " "	(12)

COUNTY SURVEYORS RECORD
 GRAND COUNTY, COLORADO.
 Survey by _____ Co. Sur.
 For H.E. THOMPSON & SONS, D.L. CO.
 Date 2 April 1953 Scale of Map 1 in = 50 ft.
 Courses True Var. 12°30' E.
 Measurements Chain & Transit
 Instruments _____
 Assistants Vern Marshall