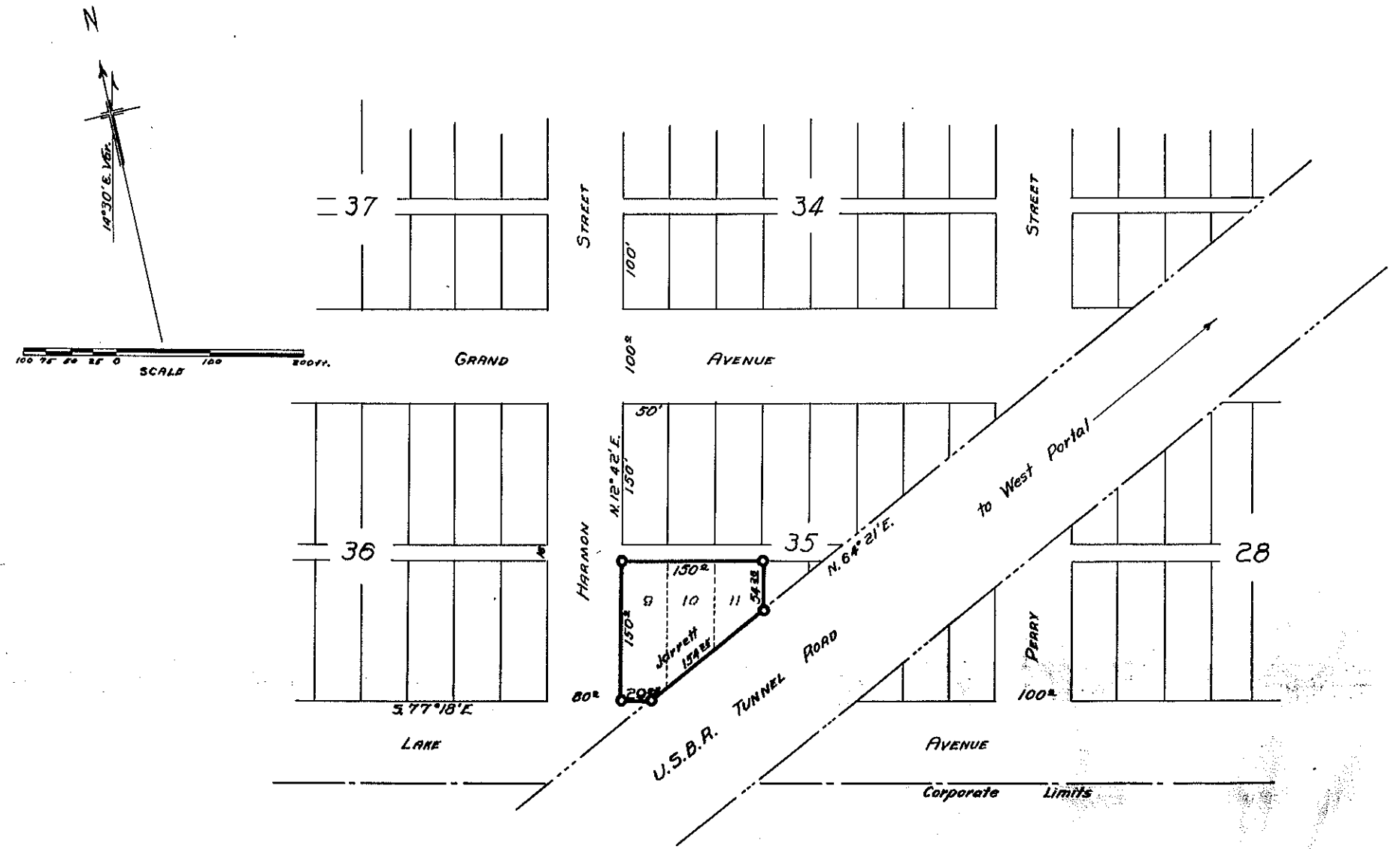


TOWN OF GRAND LAKE
GRAND COUNTY, COLORADO



Govt. corners identified = +, + . Corners of previous subd. surveys = X. Corners established on this survey = O

Description of Corners found, or established on this survey.

(1) All corners are iron pipes.	(7)
(2)	(8)
(3)	(9)
(4)	(10)
(5)	(11)
(6)	(12)

COUNTY SURVEYORS RECORD
GRAND COUNTY, COLORADO.

Survey by W. S. Lang Co. Sur.
For Joppett
Date 9 July 1953 Scale of Map 1 in. = 100 ft.
Courses True N. 12° 30' E.
Measurements Chain & Transit
Instruments
Assistants Vern Marshall