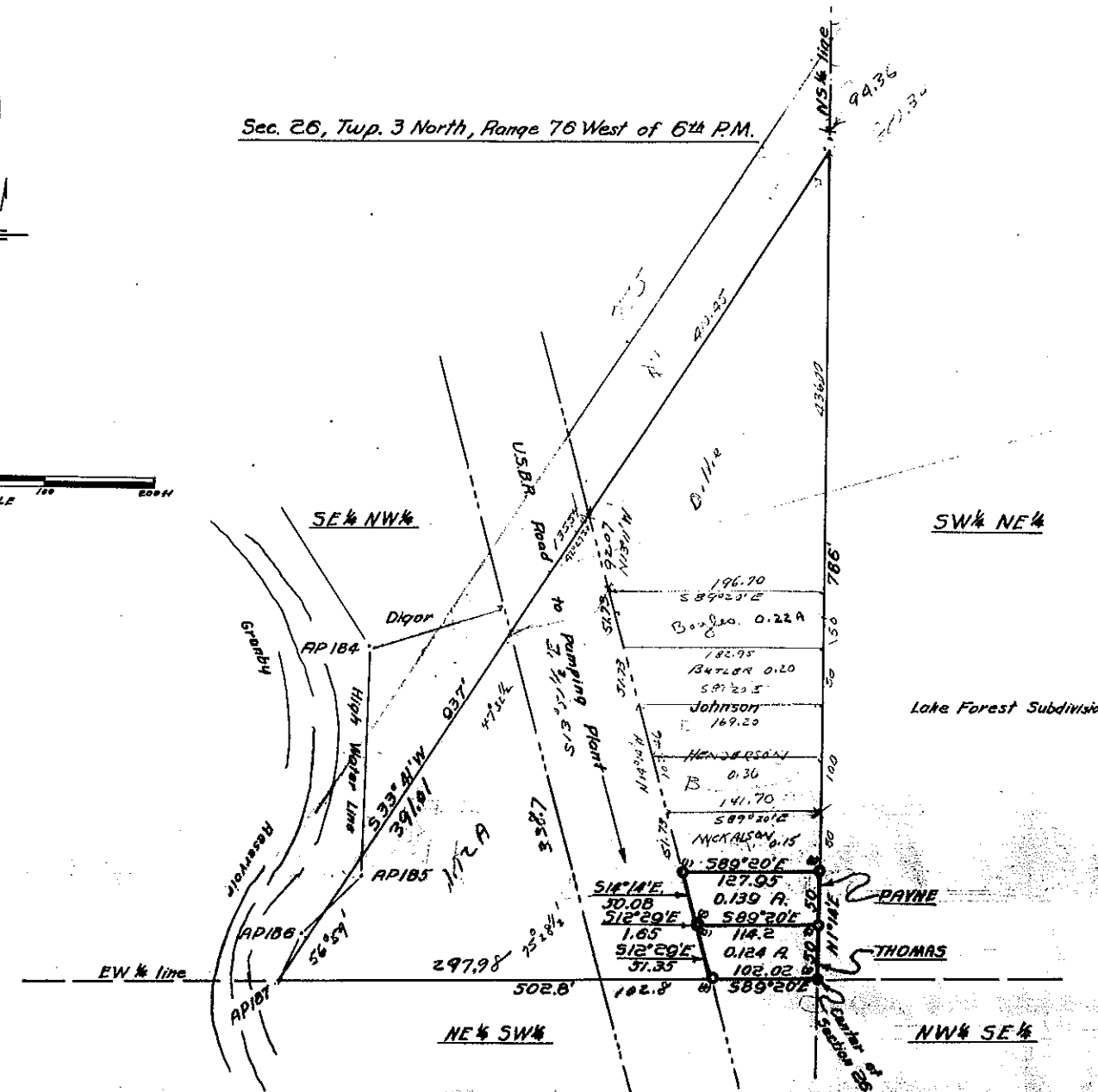


Sec. 26, Twp. 3 North, Range 76 West of 6th P.M.



Govt. corners identified = + . Corners of previous subd. surveys = X. Corners established on this survey = O

Description of Corners found, or established on this survey.	
(1) 3/4" iron pipe 18" loop set 15" in ground.	(7) 1 1/2" iron pipe.
(2) Brass cap. Mkd. AP-200	(8) "
(3) 3/4" iron pipe 18" loop set 15" in ground.	(9) "
(4) " " " " " " " " " "	(10) "
(5) " " " " " " " " " "	(11) "
(6) " " " " " " " " " "	(12) "

COUNTY SURVEYORS RECORD
 GRAND COUNTY, COLORADO.

Survey by W. R. Row Co. Sur.
 For M. Johnson
 Date 9 July 1953 Scale of Map 1 in. = 100 ft.
 Courses True Var. 12° 30' E.
 Measurements Chain & Transit
 Instruments
 Assistants Van Marshall