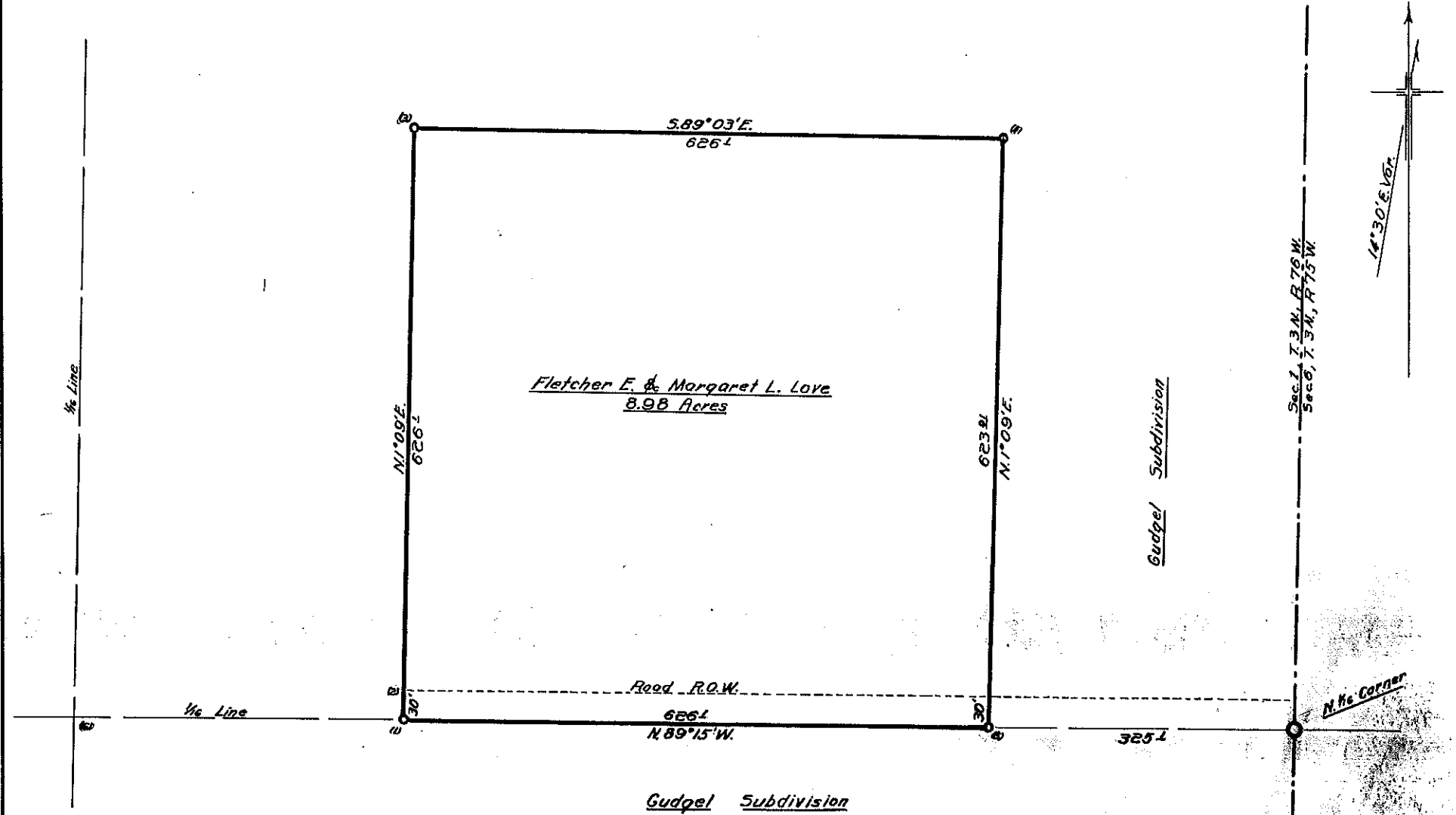


NE 1/4 NE 1/4 Sec. 1, Twp. 3 North, Range 76 West of 6th P.M.



Govt. corners identified = ♦, + . Corners of previous subd. surveys = X. Corners established on this survey = O

Description of Corners found, or established on this survey.	
(1) 1/2" iron pipe 18" long set 14" in ground	(7)
(2) " " " " " " " " " " " "	(8)
(3) " " " " " " " " " " " "	(9)
(4) " " " " " " " " " " " "	(10)
(5) " " " " " " " " " " " "	(11)
(6) 1/2" iron bar	(12)

**COUNTY SURVEYORS RECORD**  
 GRAND COUNTY, COLORADO.

Survey by J. L. Marshall Co. Sur.  
 For Ed. Howard  
 Date May 6, 1953 Scale of Map 1 in. = 100 ft.  
 Courses True Var. 14°30' E.  
 Measurements Chain & Transit  
 Instruments  
 Assistants J. L. Marshall