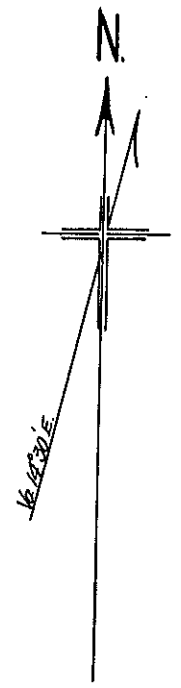
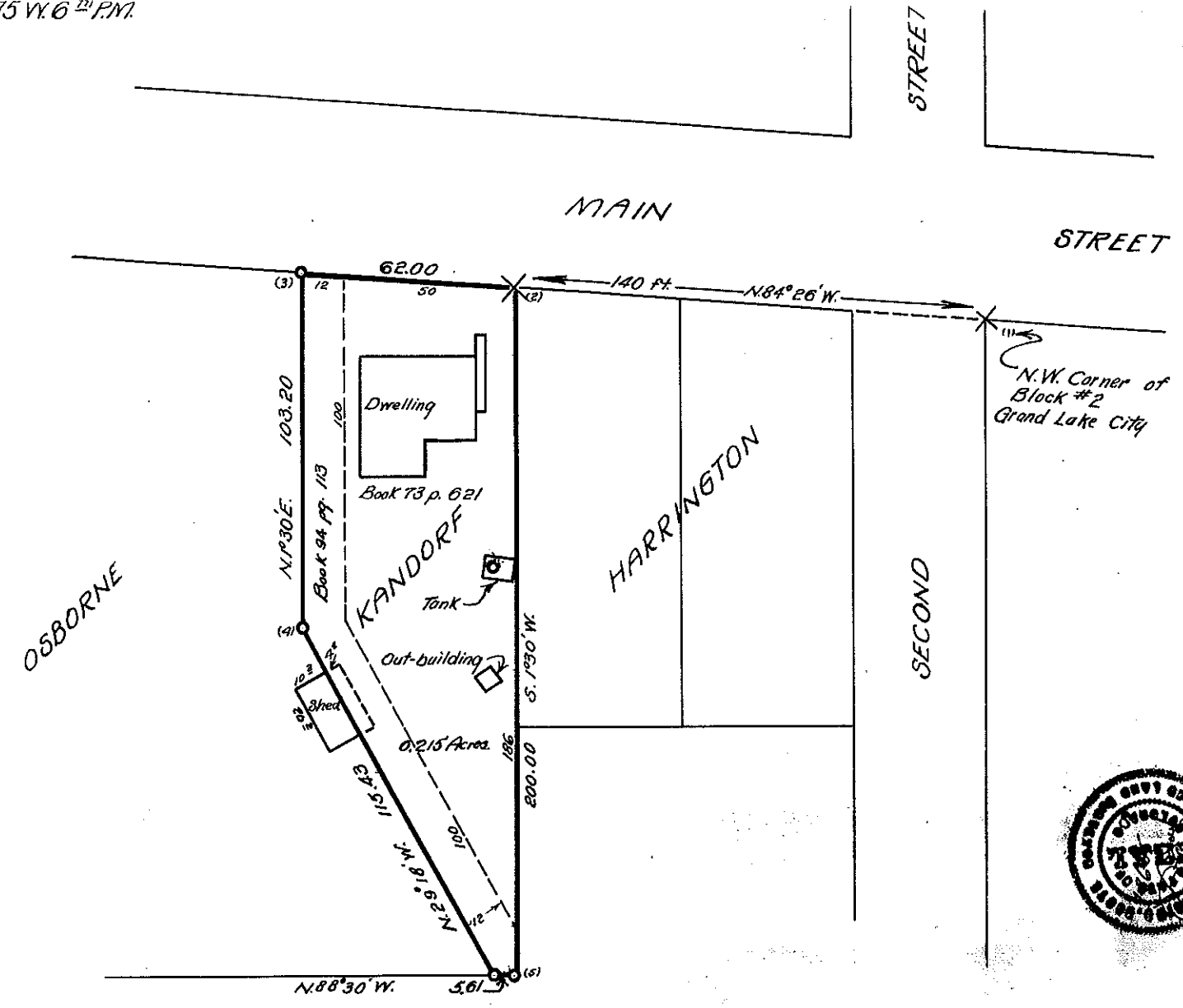


S.6, T.3N., R. 75 W. 6th PM.



1" = 30ft.
30° Reduced



N.W. Corner of Block #2 Grand Lake City



Govt. corners identified = +, +. Corners of previous subd. surveys = x. Corners established on this survey = O

Description of Corners found, or established on this survey.	
(1) Iron pipe set in concrete	(7)
(2) Iron pipe set in concrete	(8)
(3) Bridge spike	(9)
(4) " "	(10)
(5) Iron pipe	(11)
(6) " "	(12)

COUNTY SURVEYORS RECORD
 GRAND COUNTY, COLORADO.
 Survey by Ed. J. Rusk Co. Sur.
 For Osborne Ranch
 Date July 26, 1955 Scale of Map 1" = 30ft.
 Courses True Var. 14° 30' E.
 Measurements _____
 Instruments _____
 Assistants _____