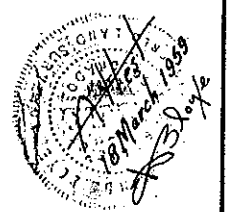
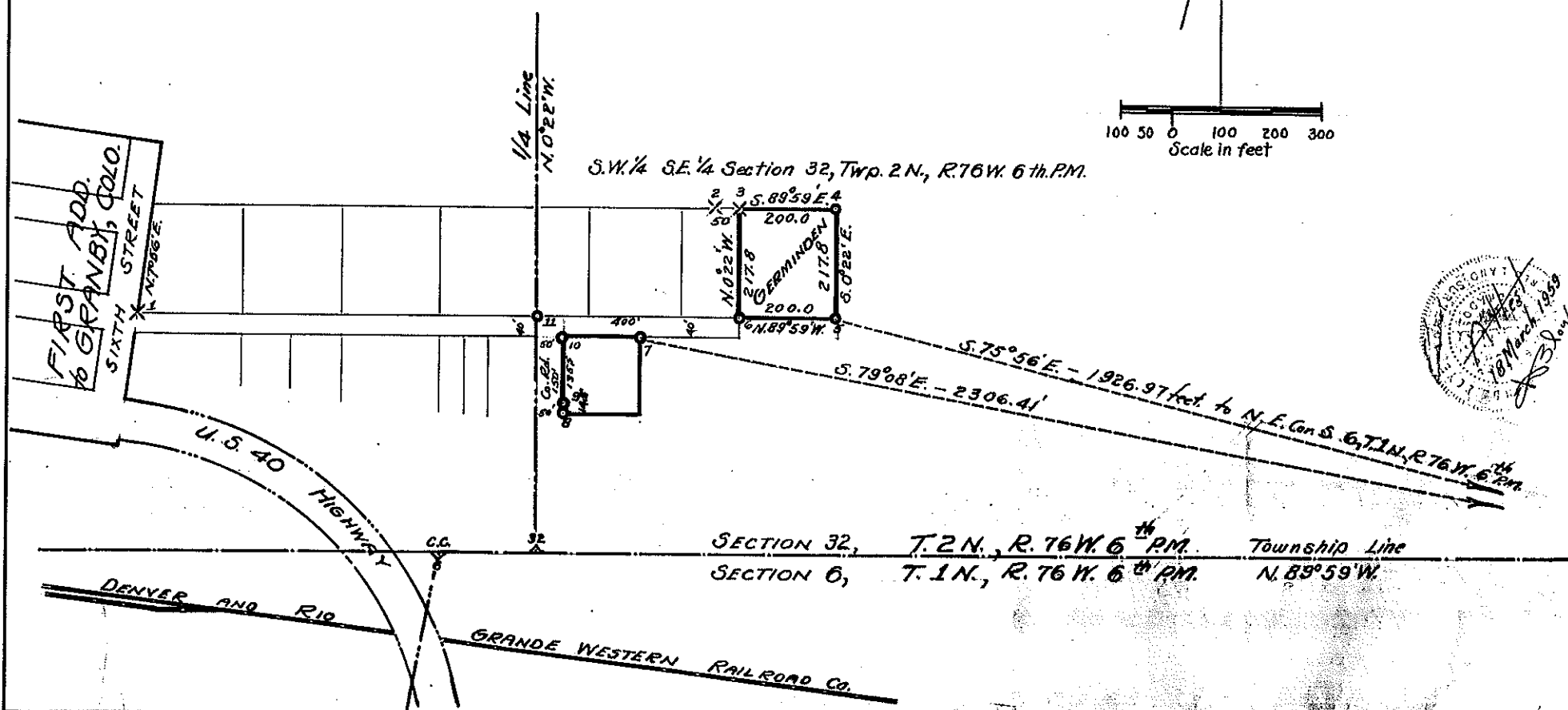
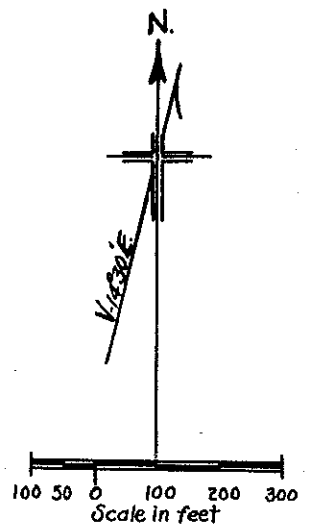


A tract of land located in the SW 1/4 of the SE 1/4 of Section 32, Twp. 2 North, Range 76 West of the 6th. Principal Meridian; Grand County, Colorado containing one (1) acre more or less and more particularly described as follows;

Beginning at the South East Corner of the tract whence the North East Corner of Section 6, Township 1 North, Range 76 West of the 6th. P.M. bears S. 75°56'E. for 1926.97 feet, thence N. 89°59' W. for 200.0 feet, thence N. 0°22' W. for 217.8 feet, thence S. 89°59' E. for 200.0 feet, thence S. 0°22' E. for 217.8 feet to the point of beginning.



Govt. corners identified = +, + . Corners of previous subd. surveys = X. Corners established on this survey = O

Description of Corners found, or established on this survey.	
(1) Steel Axial in ground	(7) 1/2" Reinforcing bar
(2) 1/2" Iron pipe	(8) 1/2" Reinforcing bar
(3) Hub and spool	(9) 1/2" reinforcing bar referenced 14.5' back of Corner # 8
(4) 3/4" rod referenced 8' East of corner post	(10) 1/2" reinforcing bar
(5) 1/2" Reinforcing bar	(11) 1/2" Iron pipe
(6) 1/2" reinforcing bar	(12)

COUNTY SURVEYORS RECORD
GRAND COUNTY, COLORADO.

Survey by S. D. Davis Co. Sur.
For Donald
Date 17 March 1955
Courses True
Measurements Chain & Transit
Instruments
Assistants