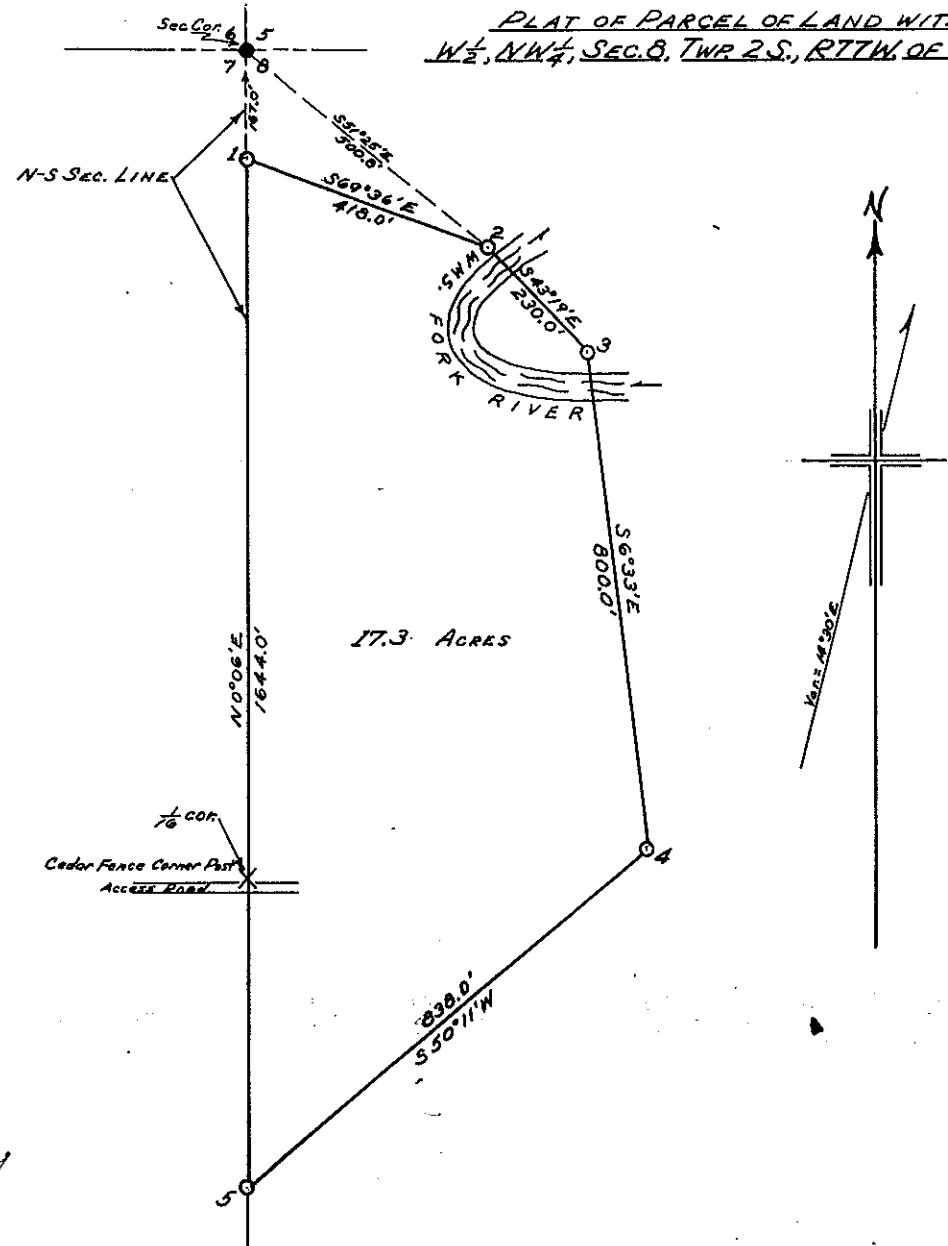


PLAT OF PARCEL OF LAND WITHIN THE  
W $\frac{1}{2}$ , NW $\frac{1}{4}$ , SEC. 8, TWP. 2 S., R. 77 W. OF THE 6<sup>TH</sup> P.M.



WRAY PROPERTY DESCRIPTION

A parcel of land containing 17.3 acres lying in the W $\frac{1}{2}$ , NW $\frac{1}{4}$  of Sec. 8, Twp. 3S., R. 77W. of the 6<sup>th</sup> P. M. and more particularly described as follows:

Beginning at corner no. 1, which is the NW corner of said parcel, on the west section line of said Sec. 8, whence the NW corner of Sec. 8 bears N 0°06' E 167.0 ft.; thence S 69°26' E 418.0 ft. to corner no. 2; thence S 43°19' E 230.0 ft. across the Williams Fork River to corner no. 3; thence S 6°33' E 800.0 ft. again across the Williams Fork River to corner no. 4; thence S 50°11' W 838.0 ft. to intersect the west section line of said Sec. 8 to corner no. 5; thence N 0°06' E 1644.0 ft. along said west section line to the point of beginning.

Govt. corners identified =  $\blacklozenge$ , + . Corners of previous subd. surveys = X. Corners established on this survey = O

Description of Corners found, or established on this survey.	
(1)	(7)
(2)	(8)
(3)	(9)
(4)	(10)
(5)	(11)
(6)	(12)

**COUNTY SURVEYORS RECORD**  
 GRAND COUNTY, COLORADO.

Survey by E. D. Bloye Co. Sur.  
 For Joe Wray  
 Date Oct. 24, 1963 Scale of Map 1"=200'  
 Courses True Ver.  
 Measurements Chain  
 Instruments Transit  
 Assistants Wright, Whaley, Kooble

*Handwritten signature and date:*  
 A. H. ... Oct. 1963