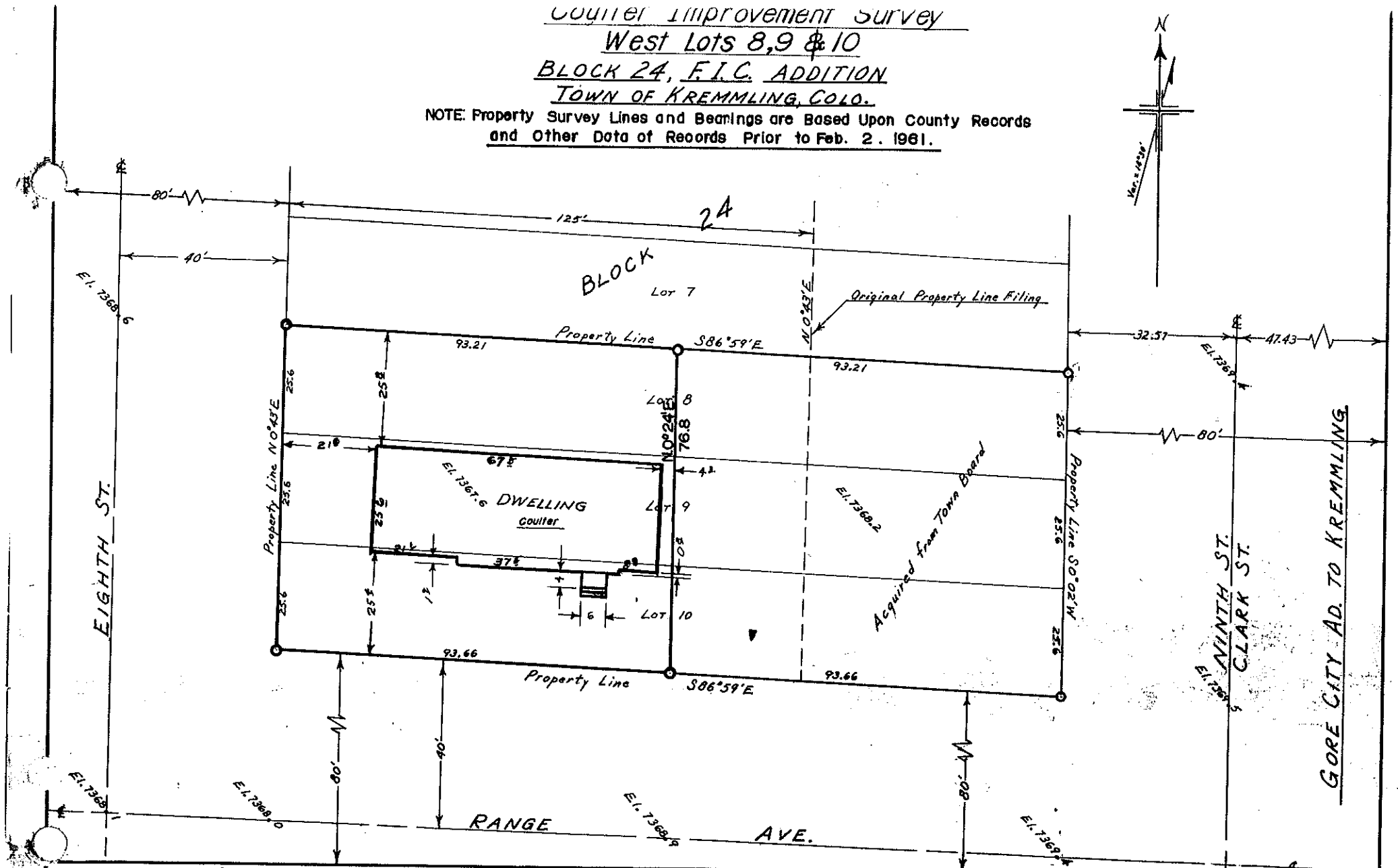
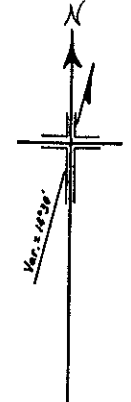


Coultter Improvement Survey
West Lots 8, 9 & 10
BLOCK 24, F.I.C. ADDITION
TOWN OF KREMMLING, COLO.

NOTE: Property Survey Lines and Bearings are Based Upon County Records and Other Data of Records Prior to Feb. 2, 1961.



Govt. corners identified = +, + . Corners of previous subd. surveys = X. Corners established on this survey = O

Description of Corners found, or established on this survey.	
(1)	(7)
(2)	(8)
(3)	(9)
(4)	(10)
(5)	(11)
(6)	(12)

COUNTY SURVEYORS RECORD
 GRAND COUNTY, COLORADO.

Survey by E. D. Bley Co. Sur.
 For James Coultter
 Date 3/6/63 11/16/66 11/16/66
 Courses True Var. 12.50'
 Measurements
 Instruments
 Assistants B. Wright HW