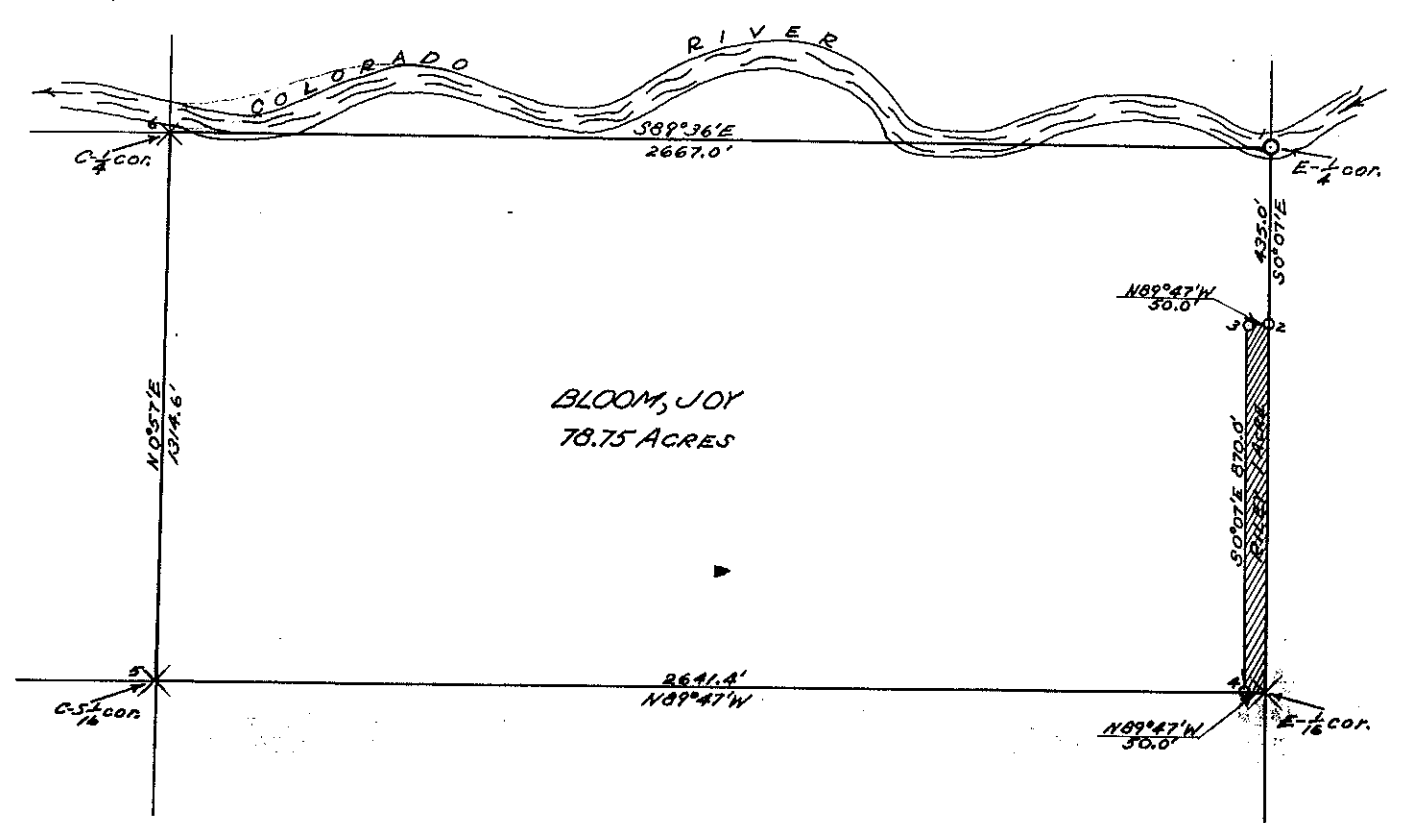


PLAT OF THE
N $\frac{1}{2}$, SE $\frac{1}{4}$, SEC. 21, TWP. 2 N., R. 76 W.
OF THE 6TH R.M.



Govt. corners identified = ♦, + . Corners of previous subd. surveys = X. Corners established on this survey = O

Description of Corners found, or established on this survey.	
(1) Steel Axle 1" diam.	(7)
(2) Steel Pin 1/2" diam.	(8)
(3) " " "	(9)
(4) " " "	(10)
(5) Steel Axle 1" diam.	(11)
(6) Steel Pipe 1" diam.	(12)

COUNTY SURVEYORS RECORD
 GRAND COUNTY, COLORADO.

Survey by E. D. Blye Co. Sur.
 For E. Bloom
 Date Oct. 1, 1913 Scale of Map 1" = 30'
 Courses Two Var. N. 75° E
 Measurements Chains
 Instruments Transit
 Assistants Wright, Whaley, Thomas

Attest
 5 Oct. 1913
 E. D. Blye