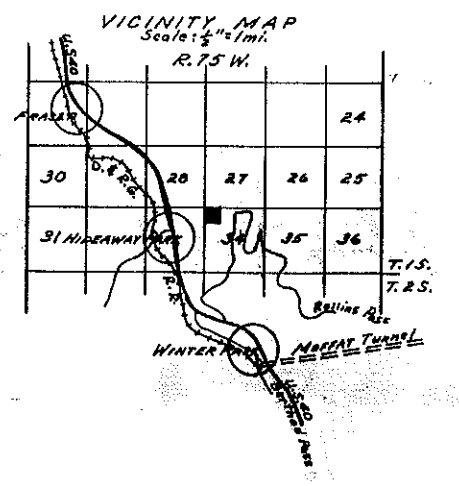
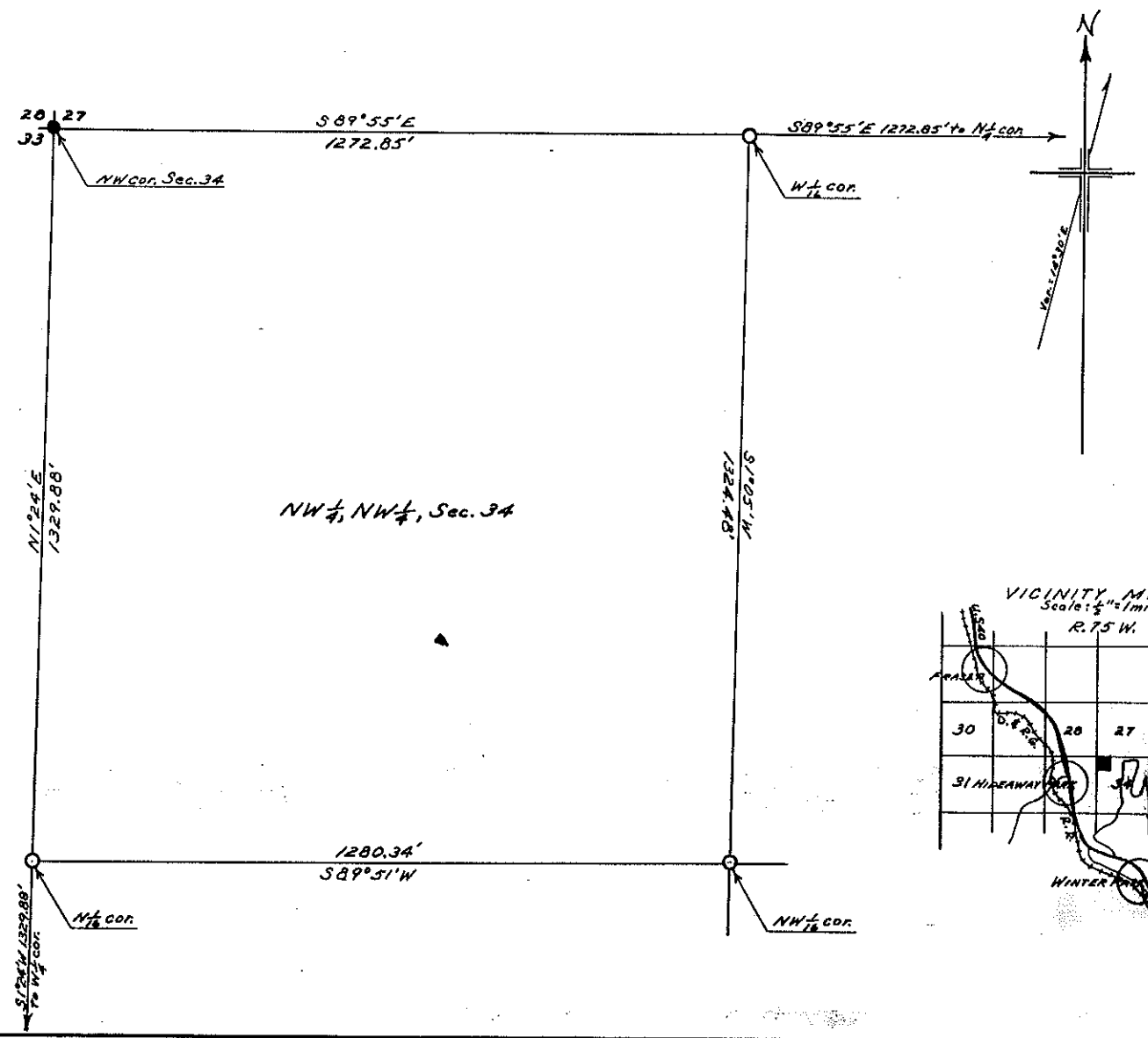


PLAT OF THE  
NW 1/4, NW 1/4, SEC. 34, TWP. 1 S., R. 75 W.  
OF THE 6<sup>TH</sup> P.M.



Govt. corners identified = +, + . Corners of previous subd. surveys = X. Corners established on this survey = O

Description of Corners found, or established on this survey.	
(1) NW cor. Sec. 34 - Brass Cap (Govt. Survey)	(7)
(2) NW 1/4 cor. Sec. 34 - Brass Cap (Govt. Survey)	(8)
(3) NW 1/4 cor. Sec. 34 - Brass Cap (Govt. Survey)	(9)
(4) NW 1/4 cor. Sec. 34 - 1/2" Steel Pin under mound of rocks	(10)
(5) NW 1/4 cor. Sec. 34 - 1/2" Steel Pin under mound of rocks	(11)
(6) NW 1/4 cor. Sec. 34 - 1/2" Steel Pin under mound of rocks	(12)

**COUNTY SURVEYORS RECORD**  
**GRAND COUNTY, COLORADO.**

Survey by E. D. Blye Co. Sur.  
 For Som. Tait  
 Date July 15, 1963 Scale of Map 1" = 200'  
 Courses True Var. 18° 30' E  
 Measurements Chain  
 Instruments Transit  
 Assistants G. Wright, G. Thomas