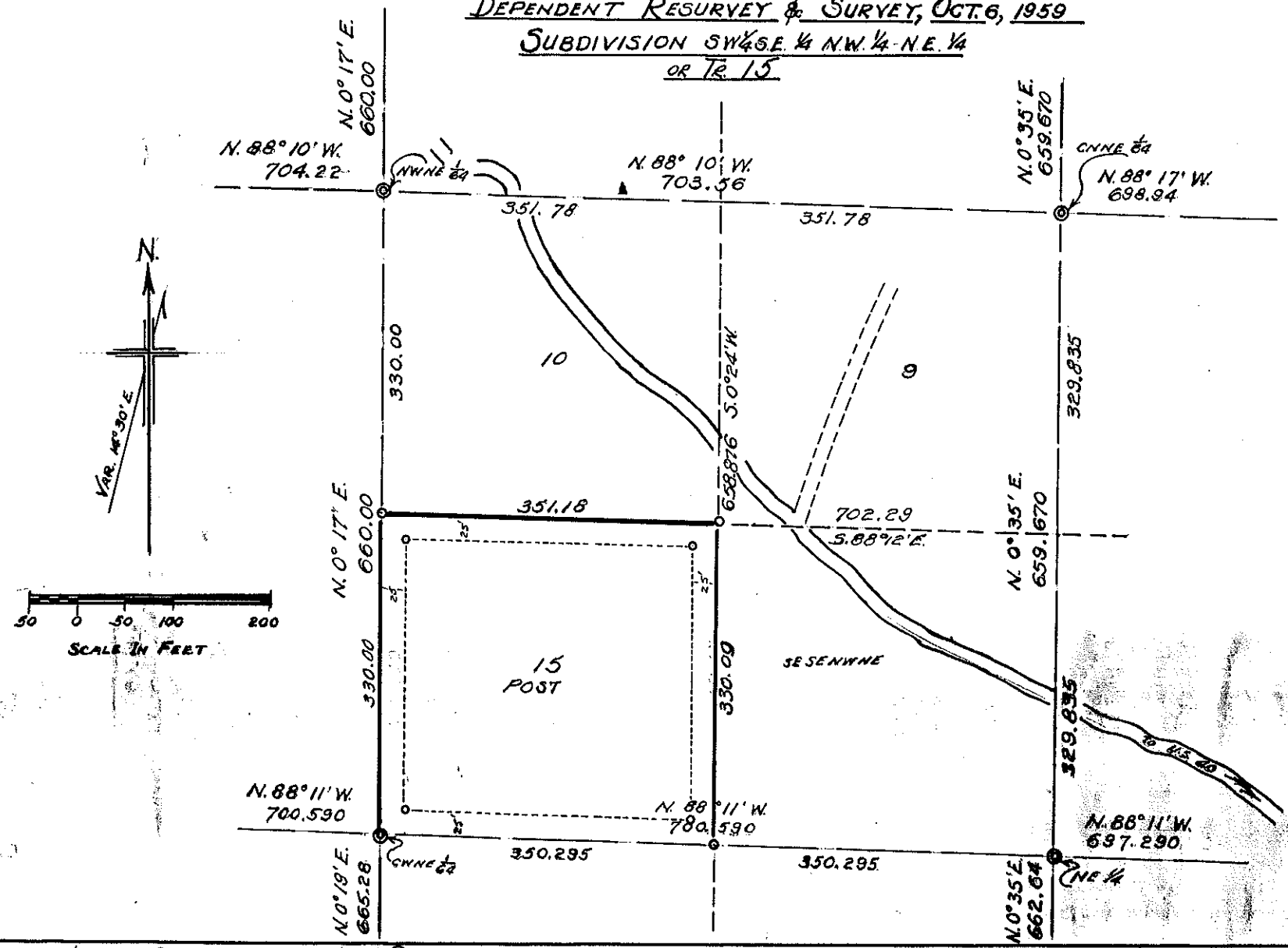


SECTION 22, TYP. 3 N., RANGE 76 W. 6<sup>TH</sup> P.M.  
 DEPENDENT RESURVEY & SURVEY, OCT. 6, 1959  
 SUBDIVISION SW 1/4 SE 1/4 NW 1/4 - NE 1/4  
 OR TR. 15



Govt. corners identified = \* \* \* \* \* Corners of previous subd. surveys = X. Corners established on this survey = O

Description of Corners found, or established on this survey.

(1)	(7)
(2)	(8)
(3)	(9)
(4)	(10)
(5)	(11)
(6)	(12)

COUNTY SURVEYORS RECORD  
 GRAND COUNTY, COLORADO.

Survey by E. D. Blay Co. Sur.  
 For W. L. Post  
 Date May - Dec. 1962 Scale of Map 1" = 100'  
 Courses True Year 1963  
 Measurements USALM Datum Oct. 6, 1959  
 Instruments  
 Assistants