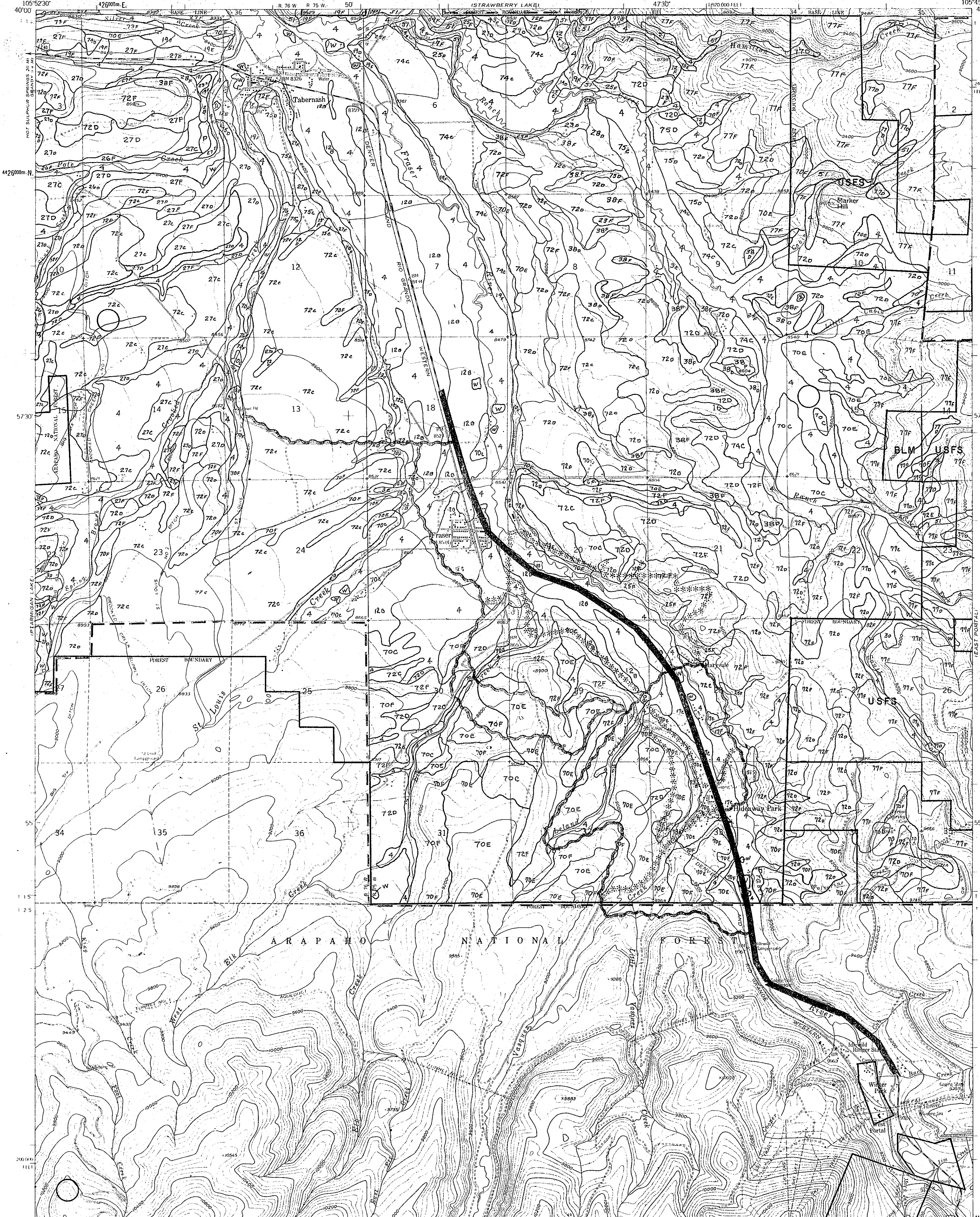


## Environmental Resource

Analysis - 1975

## Soils



### MAP SYMBOL

### SOIL SERIES NAMES

3 & 71	Clayburn loam
4	Cumelic Cryaquolls
12	Handran gravelly loam
15	Bearmouth sandy loam
19	Forelle loam
20	Leavitt loam
23	Aaberg clay loam
25	Hitchen clay loam
26	Binco clay loam
27	Cimarron loam
28	Mayworth clay loam
33	Roxal loam
35	Woodhall loam
38	Gateway loam
39	Cebone loam
40	Anvik loam
43	Grenadier gravelly loam
46	Lake Creek loam
47	Leadville fine sandy loam
51	Cryoboralls - Rock Outcrop Complex
58	Rogert gravelly loam
59	Emerald gravelly sandy loam
60	Yovimpa clay loam
70 & 69	Frisco - Peeler Complex
72	Cowdrey loam
73	Hierro sandy loam
74	Youga loam
75 & 76	Quander cobbly loam
77 & 17	Scout cobbly sandy loam
79	Upson coarse sandy loam
W	Histic Cryaquolls

### SOIL SLOPE CLASSES

B	0 - 3 % Slopes
C	0 - 6 % Slopes
D	6 - 15 % Slopes
E	6 - 25 % Slopes*
F	> 15 % Slopes**
*	soil unit 71E has slopes from 15 - 25 %
**	soil units 70F & 71F have slopes > 25 %

Source: U. S. Soil Conservation Service, Preliminary Data, Subject to change.